



Extension
UNIVERSITY OF WISCONSIN-MADISON

THE BARRON COUNTY BEACON

Barron County 4-H Newsletter



What's Happening in Barron County 4-H?

Can you believe it is already February? That means there are only 5 months before the fair! Make sure you are enrolled in all of your projects. The new system was a little tricky this year, but you can go back in and add projects you would like to participate in. You'll need to enroll in projects by April 1 to show in those categories at the fair! More info on page 2.

Archery has started with groups of 10 meeting in-person, there is also an at-home option for families that prefer that option. If you would like to host a small group (10 or less) in-person project meeting, please contact me. Many youth are interested in meeting and learning. Many clubs have taken advantage of this opportunity and offered a series of projects to their youth. There are also many virtual opportunities going on for those who want to explore that route. Look for more information inside!

Current guidelines related to COVID-19 will be in place for meeting and in-person events/meetings until March 1 (if not longer). We are still limited to 10 or less, or in pods. We are getting pretty creative around the county. The virtual format makes it difficult for many of our clubs to meet, but feel free to reach out to me or your club leader for help with projects and questions.

We can't be sure what 4-H is going to look like in the near future, but hopefully we can find ways to get something out of it. If you have ideas, please email me or call if you have ideas or questions, sara.waldron@wisc.edu or 715-537-6250.

Sara Waldron

Sara Waldron, 4-H Program Educator

Have you Enrolled? Did you sign up for the Project areas you want to show at the fair?

A huge thanks to those who have already re-enrolled in 4-H for the upcoming year. For those who haven't there is still time but re-enroll today so as to not miss updates and newsletters, as of February 22 information will only be sent to those enrolled in the 4honline 2.0. Projects can be added or deleted until April 1st. To be eligible for the fair, youth need to enroll by April 1.

Club Leaders please reach out to last year's members and encourage families to re-enroll. We know that 2020 was a difficult year, but we have learned much and have every confidence that you can have a great 4-H experience in 2021. Please reach out to new families and encourage them to enroll.

If your club needs a program for a Virtual meeting, please contact Sara. She can help brainstorm ideas, suggest topic speakers, or facilitate a program for your club. If you would like to observe a virtual (Zoom) meeting from another club, Sara will help you arrange that. The enrollment guide is linked here: <https://v2.4honline.com/#/user/sign-in> Please email Sara at sara.waldron@wisc.edu if you have problems or questions.

Barron County Fair Dates: July 14-18,

Visit barroncountyfair.com for updated information!

INSIDE THIS ISSUE January/February

Message from Sara 1

CALENDAR 2

MEETINGS 2-3

9-12 GRADE
OPPORTUNITIES 3

VIRTUAL
LEARNING 4-5

EXPLORING 4-H 6-7

SCHOLARSHIPS 8

PROJECT INFO 9

VIRTUAL
MEETINGS 10

LEADERS 11

ADULT LEADERS
ASSOCIATION 12

Calendar of upcoming Events February

- 7-14 8-13 Grade Youth Goosechase
- 8 *Cloverbud Project Discovery 6PM via Zoom
- 14 8-13 Grade Winners/4-H Quest Zoom
- 15 *Food, Science & Fun Project Discovery 6:30PM via Zoom
- 16 Animal Science Project Discovery 7:00PM Via Zoom
- 16 Adult Leaders Association meeting 7:30PM via zoom
- 17 Paper Art Project Discovery 6:30PM via Zoom
- 20 Nature Presentation/Game Night (registration deadline past, but email Sara if you would like to attend this virtual presentation.
- 21 Hunt Hill Winter Family Fun (registration full)
- 22 Horse Project Meeting (7PM Zoom)
- 24 STEAM Team Project Discovery Meeting 7:00 PM via Zoom

Please check the calendar on 4-H website: barron.extension.wisc.edu, also check for email updates on Facebook and Instagram.

NEWS DEADLINES/DATES

Newsletter Info

Starting in September, Newsletters will be going out via mail every other month (September/October, November/December, January/February, March/April, May/June, Fair Issue, July/August. Deadlines for submissions will be September 15, November 15, January 15, March 15, May 15, June 15, and July 15. Newsletters will be in mailboxes during the last week of the first month listed.

Weekly Email Blast

Starting in September, Weekly Email Blasts will be sent out every Thursday with upcoming events and information through the following week. Please send any event information by Tuesday. Please make sure your email is updated in 4-H online.

COVID-19 updates/FAQs

<https://4h.extension.wisc.edu/4-h-faqs-related-to-covid-19/>

Required Video for Leaders/Volunteers:

<https://youtu.be/QLUd9lyMGO8>

Have Questions/Comments?

Contact Sara
715-537-6253 or
sara.waldron@wisc.edu

MEETING IN-PERSON GUIDELINES

Can we meet in person? Yes. But there are guidelines. These guidelines will remain in effect until March 1, any changes after that will be communicated via email and on the website. ALL in-person events must have a program approval form completed (groups of 10 or less can be approved locally, pods need to be approved through the state office and take 3 business days). A full list of guidelines/FAQs can be found here: COVID-19 updates/FAQs <https://4h.extension.wisc.edu/4-h-faqs-related-to-covid-19>. Here is a snapshot of information on in-person programming (please keep the safety of you and the youth in mind when planning in-person programming.

Pre-approved programs, indoors or outdoors, with groups of 10 or fewer.

Educators will submit a checklist and have it approved. Pre-event registration, notification and post-event reporting are required, (please discuss plans for this with the Educator) Here are some examples of plans that have been approved..

Some criteria for in-person programs include:

Indoor gatherings are limited to 2 hours.

6 feet minimum distancing between participants is required at all times.

Physical distancing is not required between members of the same household, however each member is counted in the maximum group size.

Hand sanitizing equipment (soap and water is preferred, or hand sanitizer with at least 60% alcohol, tissues, and no-touch trash cans) must be readily available and frequently used.

Face masks or coverings are typically required even when speaking.

Note: Training for partners and volunteers is available and encouraged for all volunteers. The training FOR VOLUNTEERS is required for volunteers leading approved meetings or events.

When is Pre-approval needed?

Educators/Volunteers engaging in activities or meetings need approval any time that:

An event, meeting or activity is being organized by a 4-H volunteer or Educator.

A 4-H club or group is participating in an event organized by other organizations.

4-H is co-sponsoring an event organized by other organizations.

What counts as a group?

10 people or fewer including all adults and children meeting in one location.

Can a larger group meet in person?

More than one group (each under 10 individuals) may meet in outdoor or multi-room locations where the groups can remain separated and physically distant.

Groups may use separate spaces in the same venue such as a school, library or community center where groups remain in different rooms and physically distant throughout the event.

Groups may use several areas within a park or other large outdoor space.

Total numbers across all groups may not exceed 50 individuals.

There must be a minimum of 20 feet between each group of 10 when outdoors.

An instructor or facilitator who is not part of any small group can move between groups if 1) they maintain not less than 10 feet of physical distance from each group and 2) wear a face covering.

Plans will include how young people will access the unique spaces without congregating, including parking, drop-off and pick ups.

When making plans for outdoor gatherings it is important to have a back-up plan in case of bad weather.

9-12 GRADE OPPORTUNITIES

WI 4-H Art Teams Application Deadline Extended to February 15

Get involved in a strong community of youth leaders around the state. Youth in grades 9-13 are invited to apply for membership on our State 4-H Art Team, Communications Team, or Drama Company for 2021! These statewide arts opportunities are a great way to expand your interest and skills in the arts, further develop your leadership skills, connect with incredible youth and adult leaders from around the state, and have FUN!! Please consider taking time to apply...you won't be disappointed that you did. For more information about the State Art Teams: <https://4h.extension.wisc.edu/opportunities/statewide-events-and-opportunities/state-arts-teams/>.

Camp Counselor Training – Chance to Participate and Chance to Share Your Knowledge and Expertise

This year Upham Woods is partnering with UW—Madison Extension colleagues to offer a virtual Camp Counselor Training Program. This training will help both beginning counselors (as participants) and experienced counselors (as leaders) to be ready to serve as a counselor during Summer Camp 2021. This opportunity is open to all youth leaders, whether your group camps at Upham

Woods or elsewhere. It is also open to adult volunteers and extension staff. Registration can be found at: https://www.regpack.com/reg/templates/build/?g_id=100901680

Each certified Summer Camp Counselor through the Upham Woods Counselor Training Program will complete a Camp Counselor Workbook that follows asynchronous, pre-recorded training videos based on training topics. Counselors will connect with each other, discuss the topics, and ask questions during one of the synchronous, discussion sessions on March 27 or April 17, 2021. Virtual attendance at one of these sessions is required for all counselors. The workbook should be finished before counselors-in-training attend a synchronous training session.

Upham Woods is also seeking experienced camp counselors and camp staff input and expertise on any summer camp topic. Please consider submitting a training video or attending any of our synchronous sessions as a leader to answer questions and/or facilitate discussion. If you want to film your training video at Upham Woods, no problem! Let us know, and we will meet you there and help you film with our equipment! Submit a presenter proposal form here.

Teaching and Leading with the Virtual Learning Community

In order to continue building out a community of learning around the state, we need Youth Leaders and Adult Volunteers! If you have an interest or passion and are willing to share it with others, we'll help YOU make it work in a virtual space. We are committed to ensuring that anyone who wants to find an engaging, educational, and FUN online connection will be able to do so easily. We hope you will help us make it happen by sharing your project expertise! To learn more about the opportunity, check out the Virtual Learning Community Website.

Global Citizenship Winter/Spring Pen Pal Program

The WI 4-H Global Citizenship Winter/Spring Pen Pal Program is a special opportunity for WI youth to connect with youth from around the state, country and world!! It will run from March-May. If you are interested in participating, please complete the interest form. We will be gathering interest through February 20 and then matches will be made by March 1. Information regarding matches will be sent by March 5 and then participants will connect and make friends by sending at least two messages per month in March, April and May.

Virtual Learning Community Opportunity to Teach and Lead

How would you like to teach others across the state, virtually? While virtual learning is not for everyone, many youth and volunteers have been able to take part in new opportunities this year because they were offered virtually. If teaching on a statewide platform interests you, please keep reading for some commonly asked questions:

Why are we inviting YOU?

We have BIG DREAMS:

- ☐ provide high, quality virtual opportunities for youth and families across the state, Kindergarten-13th Grades and Adults
- ☐ involve YOUTH and adult leaders, staff and community partners in facilitating planned activities
- ☐ provide additional promotion for programs that are being offered across the state

What type of content are you looking for?

We are looking for project area content, leadership trainings and open spaces for youth to engage and connect around other topics/areas of interest. If you have an interest or passion and are willing to share it with others, we'll help make it work in a virtual space.

Does the session need to be new?

Nope. We know that many participants were just getting to know the calendar and as they did never attended all the sessions that might have interested them. Also, if you're like us, you've been learning and tweaking. If you have a program that you have already offered and are willing to offer it again, please do!

Can I submit more than one session?

Absolutely! We all know that virtual programs are most effective in 40 minutes, so if you have too much content for one session, a series is great. We've also learned from our evaluation that participants enjoy seeing each other more than once and recognizing faces and names.

Is there a deadline to submit?

Nope. Programs are needed ongoing! Submission dates are weekly. After you submit, sessions will be reviewed by a committee of youth leaders, volunteers and staff using our Positive Youth Development learning review process adapted for virtual learning.

I would like a little more information about Virtual Learning Community before I submit. Where can I go?

Fair enough. With the lessons learned, we have a new submission process, facilitator support resources, a uniform registration process, evaluation process and a plan for promotion and marketing. Our website can be found

at <https://4h.extension.wisc.edu/VLC>

Okay! I'm convinced. Where do I submit?

Submissions can be made at: https://uwmadison.co1.qualtrics.com/jfe/form/SV_2idXsm8tPCVGILz.

With the easy to use back button, you can explore the submission form to learn a little more about the types of sessions and content.

What happens after I submit?

Our committee will respond to submissions with a follow up e-mail or call to the primary contact within a week.

The Virtual Learning Community knows how important supportive relationships within youth development spaces are to creating community, valuing youth voice and empowering action in our communities. We are committed to ensuring that anyone who wants to find an engaging, educational, and FUN online connection will be able to do so easily. We hope you will help us make it happen.

Volunteers Needed

Want to share your
Project knowledge?

Have something interesting
to teach youth?

Want to teach in
small groups in person
(10 or less) OR Virtually?

Look no further! 4-H youth are looking to get some projects started and YOU might be the resource they are looking for.

Contact Sara if you have an idea. If you aren't familiar with virtual teaching, we can get you started, so don't let that stop you! E-mail: sara.waldron@wisc.edu or call 715-537-6253.

4-H PROJECT DISCOVERY

Project Discovery-Join us for hands-on fun!

We have 6 months of fun planned starting in January in the following project areas: Cloverbuds (5K-2nd grade), Food, Science & Fun (3rd grade up), Animal Science (3-8th grade), Paper Art (all ages), Science, Technology, Engineering, Arts, Math (STEAM) TEAM (grade 3-6), and Outdoor Leadership (high school).

Registration is ongoing, some classes do have limited space/supplies so the sooner you join, the more fun you will have. Project information and registration information can be found online at

<https://sites.google.com/wisc.edu/area2projects/>.

Project Discovery Descriptions:

Cloverbuds (kindergarten (5K-2nd Grade)

Meets 2nd Monday, January-June via zoom at 6:00PM

The Cloverbuds Project is designed for youth grades 5K-2nd grade to explore and discover project areas. These monthly sessions will provide fun instruction from the Cloverbud Activity/Record Book published by Extension Burnett County. Led by Burnett County Positive Youth Development Educator, Beth Rank and a youth and/or adult leader. For more information, email Beth at beth.rank@wisc.edu or call 715-349-2151 to leave a detailed message.

Paper Art (All Ages)

Meets 3rd Monday January-June via Zoom at 6:30PM

Throw out the brushes, drop the scissors, hide the paint AND bring your glue. Join us for an opportunity to create beautiful works of art with only paper, glue and your own two hands. Led by Sawyer County Positive Youth Development Educator, Sky Holt. For more information, call 715-634-4839 or email sky.holt@wisc.edu

Animal Science (3-8 Grade)

Meets 3rd Tuesday January-June via Zoom at 7PM

Come along with me for the next 6 months and learn all about animals, from small to large! We will take time to get to know a few of your favorite species and understand more about them and how to manage them. Led by Rusk County 4-H Program Coordinator/Community Youth Development Educator, Breanne Meyer. For more information, call 715-532-2151 or email breanne.meyer@wisc.edu.

STEAM Team (3-6 grade) - LIMITED SPACE

Meets 4th Wednesday, January-June via Zoom at 7PM

Explore the world of Science, Technology, Engineering, Arts and Math. Learn from your peers using the design process. We will start with circuitry and continue on from there! Led by Barron County 4-H youth and

Barron County 4-H Educator, Sara Waldron. For more information, call 715-537-6250 or email sara.waldron@wisc.edu.

Food, Science & Fun (3rd grade through adult)

Meets 3rd Monday, January-June via Zoom at 6:30PM

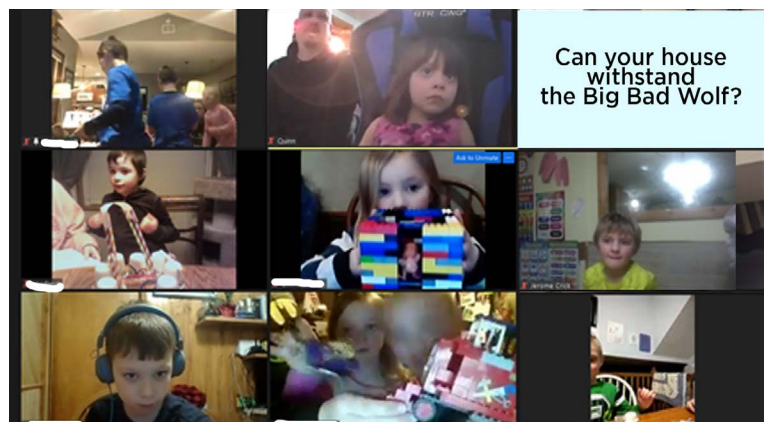
Partnering with FoodWise to offer a Foods & Nutrition and Food Science program for youth and adults together. During our time, we will be doing some food experiments and demonstrations, recipe sharing, culinary skill development, and more! Led by Burnett County Positive Youth Development Educator, Beth Rank and Julie Yezek, FoodWise Educator. For more information, email Beth at beth.rank@wisc.edu or call 715-349-2151 to leave a detailed message.

Outdoor Leadership (High School)

Meets 4th Tuesday, January-June via Zoom at 6:30PM

Have you ever wondered what skills it takes to be an outdoor leader? Maybe you even have some of them! Here is your chance to learn many skills that apply both to the outdoors and other settings. Led by Washburn County Educator, Anna DeMers and volunteer Sasha Busjahn. For more information please email anna.demers@wisc.edu.

We look forward to seeing you all virtually soon!

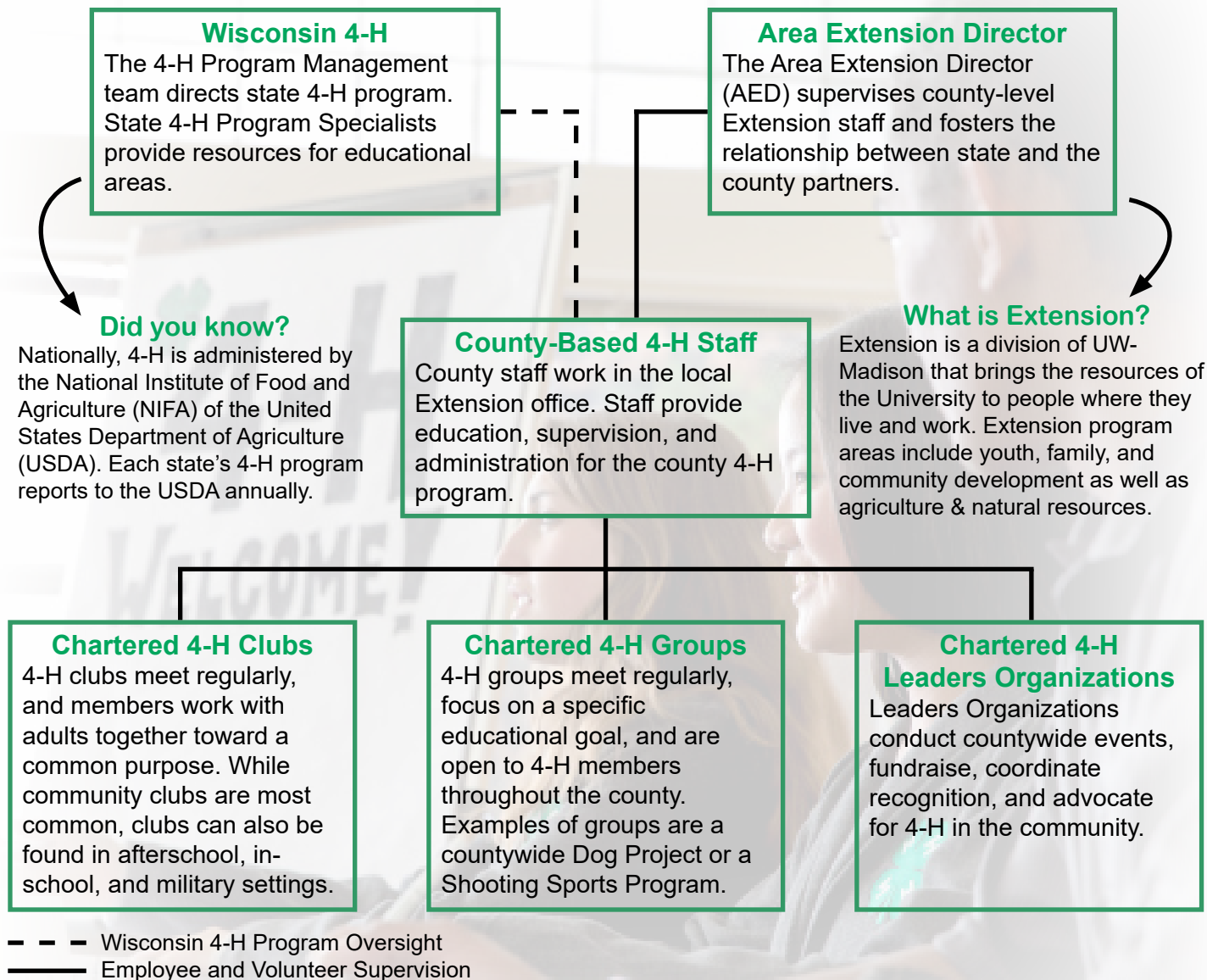


Virtual Learning. Barron County youth join new friends from area counties to learn new things.



Beyond the Club

You're a part of something big! 4-H is the nation's largest youth development organization, with more than 6 million members and over 90,000 clubs. Because of how big 4-H is, it can be hard to understand where you (and everyone else) fits into the greater scope of 4-H from a state and national level.



Where do I fit?

Most members get their start with a 4-H club. If your child wants to get more involved with 4-H beyond the club level, check with your club leader or your county-based 4-H staff to learn about additional 4-H opportunities. Getting involved with your county's groups or the Leaders Organization can be great ways to connect with new opportunities.





YOUTH Matter!

Youth lead and make decisions in 4-H clubs, groups, and experiences. That means that the most important piece of 4-H is YOU. As a 4-H member, you help to make decisions and can make your voice heard.

You can help to lead and make decisions in 4-H. Each statement is a way that you can get involved. Decide if you think the statement shows how you can be involved in 4-H at the club, county, state, or national level. Circle where this might apply. Some statements might apply to more than one level of 4-H.

EXAMPLE

Sign up for a committee to help run a local 4-H event.

Club County State National

Vote on topics at meetings.

Club County State National

Represent my region on the Wisconsin Leadership Council.

Club County State National

Lead other young people and be a mentor as a camp counselor.

Club County State National

Attend Leaders Organization meetings and share my opinions.

Club County State National

Apply to be a delegate for National 4-H Conference.

Club County State National

Run for an officer position.

Club County State National

Be on the 4-H Communications Team.

Club County State National

Apply for the 4-H Drama Company.

Club County State National

Be a counselor for Space Camp.

Club County State National

Teach other members something I know.

Club County State National

Be on the 4-H Arts Team.

Club County State National



Credit: Heidi Vanderloop Benson



Credit: Wisconsin State 4-H Communications Team

4-H Drama Company performing at 4-H & Youth Conference

Don't know what one of these statements is talking about? Ask your club leader, county-based 4-H staff, or do an online search with your parent/caregiver!

Which of these leadership opportunities sounded the most interesting?
Why is it interesting to you?

SCHOLARSHIP OPPORTUNITIES

4-H Adult Leaders Association Scholarship

The Barron County 4-H Adult Leaders Association offers scholarships to 4-H graduates every year. Amounts will be determined prior to review of applications and are based on the amount of funds available. At least 2 scholarships will be given.

To be eligible for the Barron County 4-H Scholarship, you must:

1. Be a member of 4-H for at least three years, currently enrolled and achieved in 4-H the previous year.
2. Be graduating from 4-H in the current year (4-H youth are eligible to graduate 4-H either during 12th grade or their first year in post-secondary education.)
3. Be attending or planning to attend a 4-year college, 2-year technical college or other accredited post-secondary training program.

Application deadline is April 1 and can be mailed OR emailed. Application requirements can be found online at barron.extension.wisc.edu under 4-H and under "fairs, forms, and applications". Questions, please contact Sara Waldron at sara.waldron@wisc.edu or 715-537-6253.

Kathy Holten Memorial Scholarship

One \$500 scholarship will be awarded to an individual enrolled in the Barron County 4-H program and planning to graduate from 4-H this year. This scholarship is given in memory of Kathy Holten who played an integral role in the Barron County 4-H program. The scholarship is given by the Holten Family. Application materials are available on the Barron County Extension website.

WI 4-H Foundation Scholarship

The Wisconsin 4-H Foundation will award more than \$15,000 in scholarships to outstanding Wisconsin 4-H members and alumni pursuing higher education in 2020. To be considered for financial support, applications must be received by the Wisconsin 4-H Foundation via email by Monday, March 15, 2021, 5:00 pm.

Wisconsin 4-H Foundation scholarships are awarded to students based on demonstrated personal growth through 4-H, development and leadership in 4-H, academic performance and future educational goals. For application materials and guidelines, please visit: <https://wis4hfoundation.org/scholarships>

4-H DOG PROJECT

Dog Project Updates: Tentative dates and times have been set for the Dog Project. If you have NOT received an email directly from the project email, please contact them at barroncounty4hdogproject@yahoo.com (information can be found at: <https://barron.extension.wisc.edu/4hyd/projects/4-h-dog-project/>).

2021 Educational/Kickoff Meetings

No meetings in 2021 due to COVID-19 restrictions

Meet & Greets (WITH DOGS)

These classes are for new members and any dog new to the project. Dates and participation to be determined.

2021 Training Centers (All Members with dogs)

Cumberland

Obedience classes begin – Tuesday, April 27th, 6:30 pm – at the beach (On-leash work only)

Rice Lake

Obedience Classes begin – Wednesday, April 28th – at Barron County Fairgrounds.

Start Times: Beginners 6:30p.m.; 2nd and 3rd Year 6:30 p.m. and/or 7:00 p.m.; 4th year and up 6:00 p.m.

*Showmanship times to be announced at the Rice Lake Center

Agility Classes Begin – Wednesday, April 28th at Barron County Fairgrounds

6:00 pm – First year

7:00 pm – Second year and up

2021 Other Events

***All information can be found on the Extension website. Registration is due April 1 with check. All classes will follow 4-H COVID guidelines and are subject to schedule changes. Information will be communicated as available, please check your emails.*

Horse Project Educational Night

Monday, February 22

7:30 PM

watch your email for link information
or check online.

4-H LIVESTOCK PROJECT

Livestock updates:

Updates have been posted on the site 4-H website. Deadlines for hog registration (4/7/2021) and lamb registration (4/23) are set. You will be notified when tags are available. YQCA and Project updates will be coming soon. Watch your email!

STATE LIVESTOCK OPPORTUNITIES

VIRTUAL UW-MADISON LIVESTOCK EDUCATIONAL PROGRAMS

The Wisconsin Youth Livestock Program (WYLP), in connection with the University of Wisconsin Madison Animal & Dairy Sciences Department, College of Agricultural and Life Sciences and Division of Extension, are excited to offer these LIVE Virtual Zoom educational programs for the winter/spring of 2020-2021. These current topics are for youth and adults alike and occur on the 2nd Thursday of the month from January through May. Each session begins at 7 p.m. CST with a presentation followed by Q&A. You must register in order to receive the connecting information through email.

For more detailed information of each presentation and to register for any or all of the events, please go to: <https://go.wisc.edu/r3x8lh>.

February 11 – Feeding & caring for Swine without Ractopamine

March 11 – Lamb Live & Carcass Evaluation; Lamb Culinary products

April 8 – Artificial Intelligence in Animal Sciences using sensors and cameras

May 13 – Meat Science Cookery

For more information visit <https://go.wisc.edu/r3x8lh> or contact Bernie O'Rourke, UW- Madison Extension Youth Livestock Specialist at (608) 263-4304 or borourke2@wisc.edu.

For more information go to the Wisconsin Youth Livestock Program. Website – <https://fyi.extension.wisc.edu/youthlivestock/>

YouTube – <https://www.youtube.com/channel/UC1mPVKo63rmBr5s3kFyvX9g>

Facebook – <https://www.facebook.com/wisconsinyouthlivestock/>

Instagram – <https://www.instagram.com/wiyouthlvstk/>

Twitter – <https://twitter.com/wiyouthlvstk> Recorded programs can be found here: <https://youtube.com/playlist?list=PLI3EqGUag9cyyrIQ1nIKFgpcyEODfbNuV>

CHECK YOUR PROJECTS!

How To Check Your Projects

Did you enroll in all of the projects you think you enrolled in? Please sign in to wi.4honline.com and double check. You need to click on view next to your name, then click projects (on the left). If any are missing, please click "Edit" and add them.

Want the Latest News

Website: barron.extension.wisc.edu

Facebook: @barroncounty4h

Instagram: @barroncounty4h

E-Newsletter: delivered via E-mail each Thursday (make sure it's not going into your spam)

Newsletter delivered every other month

WISCONSIN YOUTH LIVESTOCK PROGRAM (WYLP) PRESENTS

.....

EDUCATIONAL PROGRAMMING 2021

January 14 - Roaming the Rumen

February 11 - Feeding & Caring for Swine without Ractopamine

March 11 - Lamb Live & Carcass Evaluation; Lamb Culinary products

April 8 - Artificial Intelligence in Animal Sciences

May 13 - Meat Science Cookery - making and cooking of meat products

All events are virtual and begin at 7 p.m.
Can meet county educational requirements.



For more information & how to register: <https://go.wisc.edu/r3x8lh>





Creating a Welcoming Virtual Environment

Creating a welcoming environment in 4-H is critical to the member (and leader, and family) experience. We know that feeling a sense of belonging is a cornerstone in the Essential Elements of 4-H – and includes three components:

- 1) A positive relationship with a caring adult
- 2) An inclusive environment
- 3) A safe environment

Recognizing virtual platforms are not the norm for 4-H clubs and groups to meet, below are a few tips and tricks to try, to ensure your virtual meetings are welcoming, inviting, positive and safe:

Pre-Meeting Tips:

Being online with youth has its own successes and challenges. Be sure to check out the Wisconsin 4-H website for tips (especially around safety and quality) for engaging youth in online learning.

- Find a platform that works for you and your group. Learn the basics of it, and test your technology. Encourage your families to test their technology too!
- Send a welcome or give a call to new members and families. This will allow time for them to ask questions and for you to explain what to expect at the meeting.
- Set the tone, whether virtually or in person, think about how the environment makes people feel welcome. Be excited about the new opportunity to learn and still meet!

During the Meeting:

- Join the virtual meeting a few minutes early. Welcome everyone by name as they join. Consider playing music, asking questions, or using the chat features to quickly engage people as they arrive. Invite your youth leaders or officers to help with this!
- Ask people to change their name on their zoom or other platform. This allows everyone to call them by first name.
- Incorporate fun, easy activities (like a scavenger hunt, find it fast, virtual high five, stretch breaks, etc) every 15 minutes or so.
- Use tools like the chat box to allow everyone's voice to be heard
- Work with members and youth leaders to present, teach, and lead. Most youth are comfortable with technology and they do a great job of teaching others!

After the Meeting:

- Touch base with anyone who was having tech issues, sending out a follow up note to families recapping the meeting and sharing reminders for future events.

LOOKING FOR INPUT

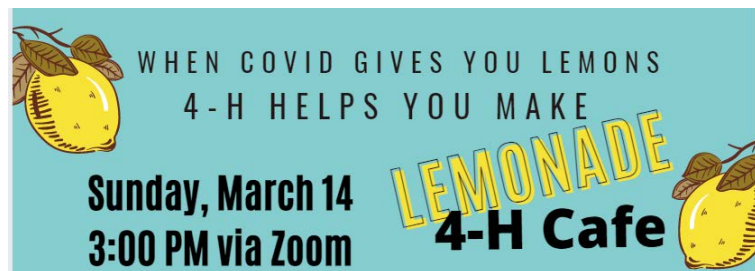
Looking Ahead at the Fair

Are you thinking about the fair? There have been many questions about the fair. 4-H youth will be eligible to show under the 4-H clover even if guidelines remain the same. There might be changes on some of the fair sponsored happenings at the fair (food stands, 4-H volunteers, etc.). Things will be communicated ASAP. On that subject, there have been many questions about the Foods Revue, Cake Revue, Performance Arts Festival and a possible Clothing Revue. Let me know your input and what your clubs are thinking. We'd like to find ways to meet the needs of all of our youth and your input is appreciated.

SAVE THE DATE

Save the Date: Volunteer Opportunity

If you'd like to talk 4-H ideas with volunteers from all around the state (all ideas, not just ideas happening because of COVID-19). Mark March 16 at 3PM on your calendar! If your club needs Annual leader training, this can count.



CLUB ROSTERS AND NEW MEMBERS

Club Rosters and New Members

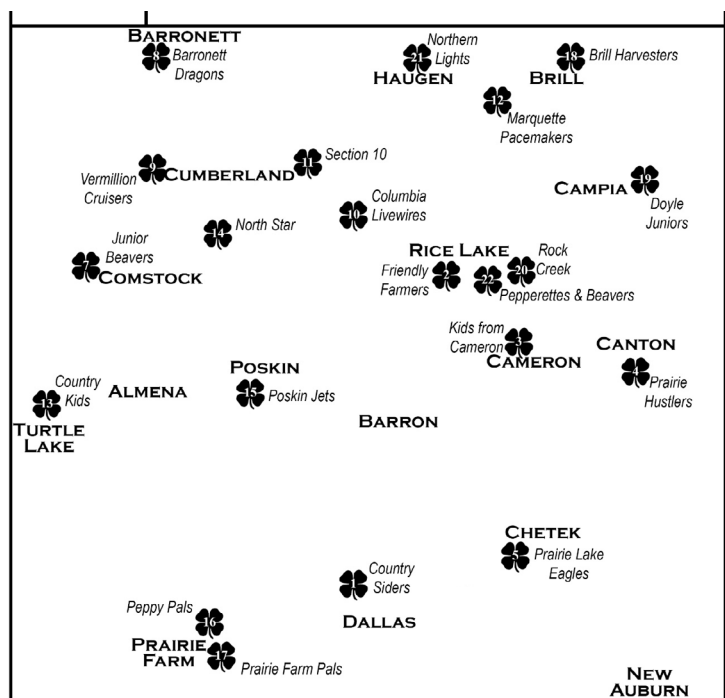
Club leaders, have you been able to access your club rosters in 4-H online? If not, email Sara or call the office 715-537-6250. There are many new members to Barron County 4-H. Make sure to touch base with your last years members if you don't see them on your list. Final project registration is April 1 to be eligible for the fair. As a 4-H member.

HOSTING A ZOOM MEETING

ZOOM 4-H ACCOUNTS AVAILABLE for your Club meetings or project offerings!! : The Barron County 4-H Leaders Association can help you host your virtual meeting. These accounts can be used for Club virtual meetings, county-wide project meetings, or county committee meetings. Please contact Sara at sara.waldron@wisc.edu for information.

Barron County 4-H Clubs & Contacts

1)	Country Siders	Kaylee Lemler	715-658-1066
2)	Friendly Farmers	Erin Owens Libby Smith	715-790-9230 715-205-4529
3)	Kids From Cameron	Barb Lancaster	715-658-1988
4)	Prairie Hustlers	Kirsten Huth Saundra Linton	715-764-2097 715-924-4870
5)	Prairie Lake Eagles	Joyce Nelson	715-458-1944
7)	Junior Beavers	Melissa Weaver Greg Weaver	715-419-0500
8)	Barronett Dragons	Peg Thompson	715-822-8872
9)	Vermillion Cruisers	Emily Drafall Heather Colburn Michelle Stouffer	715-419-0629 715-357-6404 715-822-2823
10)	Columbia Livewires	Carie Peterson	715-651-4545
11)	Section Ten	Tamala Anderson	715-419-0421
12)	Marquette Pacemakers	Janice Solum Cathy Solum	715-651-7698 715-234-6874
13)	Country Kids	Lynn Kettenacker	715-986-2505
14)	North Star	Diana Bazewicz	715-641-0926
15)	Poskin Jets	David Frandsen	715-790-0067
16)	Peppy Pals	Katrina Chovan Tori White	715-455-1104 715-418-0054
17)	Prairie Farm Pals	Tammy Rassbach Becky Segebrecht	715-418-0193 715-505-1413
18)	Brill Harvesters	Staci Rae	715-419-2718
19)	Doyle Juniors	Cindy Broker Arlaina Meyer Amanda Alton	715-234-2044 715-554-4031 715-651-2834
20)	Rock Creek	Kori Richter	715-590-2495
21)	Northern Lights	Karen Germanson Jamie Kunesh	715-236-9123 715-790-0938
22)	Pepperettes & Beavers	Wendie Brooten	715-475-8249





Extension
UNIVERSITY OF WISCONSIN-MADISON

THE BARRON COUNTY BEACON

Barron County 4-H Newsletter

University of Wisconsin -Madison
Division of Extension | Barron County
Barron County Government Center
335 E Monroe Ave., Room 2206
Barron WI 54812

NON PROFIT ORGANIZATION
U.S. POSTAGE PAID
BARRON, WI 54812
PERMIT NO. 74

Change Service Requested

4-H Adult Leader Association Council

President: Tamala Anderson (419-0421)
Vice President: Shawna Skoug (790-1460)
Treasurer: Tanya Riebe 651 (757-5757)
Secretary: Carie Peterson (651-2161)
Past President: Brian Holten (837-1216)
Northwest Representative: Becky Hammann (637-0586)
Northeast Representative: Cathy Solum (234-6874)
Central Representative: Barbara Lancaster (658-1988)
Southwest Representative: Joyce Nelson (458-1944)
Southeast Representative: Kaylee Lemler (764-2484)
Youth Representative: Alleah Anderson



@UWEXBarron



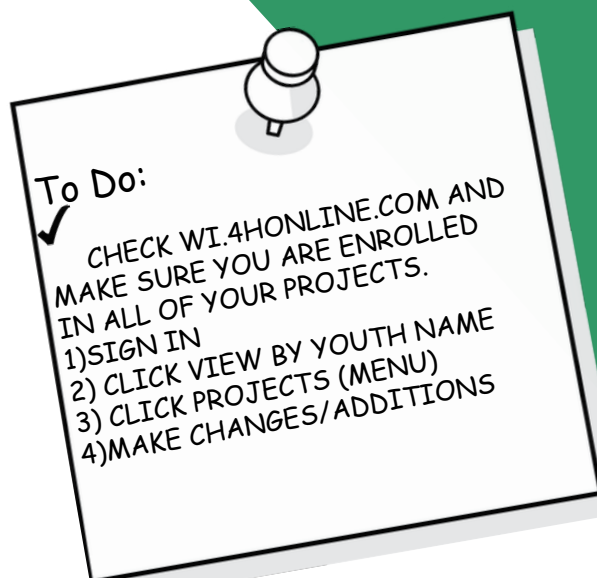
@BarronCounty4H



@UWEXBarron

Website:

<http://barron.extension.wisc.edu>



Extension Barron County | Phone: 715-537-6250 | Fax: 715+537-6814

Sara Waldron

4-H Program Coordinator
Sara.Waldron@wisc.edu

Kim Grover

Administrative Specialist
Kim.Grover@wisc.edu

Lori Baltrusis

Area Extension Director
Lori.Baltrusis@wisc.edu

Missy Bablick

Human Development Family
Relationship Educator
Missy.Bablick@wisc.edu

Kathy Splett

FoodWise Coordinator
Kathy.Splett@wisc.edu

Andrea Gardner

FoodWise Educator
Andrea.Gardner@wisc.edu

An EEO/AA employer, University of Wisconsin-Madison Division of Extension provides equal opportunities in employment and programming, including Title VI, Title IX, the Americans with Disabilities Act (ADA) and Section 504 of the Rehabilitation Act requirements.