



Extension
UNIVERSITY OF WISCONSIN-MADISON

THE BARRON COUNTY BEACON

Barron County 4-H Newsletter

Congratulations
High School and
4-H Graduates

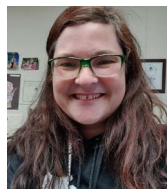


Congratulations Kim Grover!

Kim has retired after 44 years. Her last day in the office was on Friday, May 5. To honor Kim's wishes in not having a big celebration we welcome any cards or best wishes to be sent to the office and we will get them to her. Kim has made a HUGE difference in Barron County 4-H over the last 44 years!

It's Going to Be a Busy Summer!

April and May have been bursting with 4-H activities and summer is going to be even busier. The calendar is filling up with camps, fair activities and more!



I am also excited to announce that Isabella Lyste will be joining Barron County 4-H as the 4-H summer intern. She is a member of the Poskin Jets 4-H club (her last year in 4-H) and is finishing up her first year at UW Superior. Her first day in the office will be Monday, May 22. You can look for her formal introduction in soon! Isabella will be busy helping with 4-H camp, Cloverbud Camp, and many opportunities and experiences this summer!

Speaking of a busy summer, Record Book time is just around the corner, or now known as the Barron County 4-H Record/Showcase. If you're new to 4-H, record books have a long tradition in Barron County 4-H and are completed at the end of each 4-H year to earn achievement and awards. A team of leaders, with input from youth and adults, has updated the criteria for keeping records as well as the achievement policy. All youth (grades 3 and up) are encouraged to achieve each 4-H year, not only does this teach youth important life skills, it provides a record (and special memories) of 4-H involvement for the year. Under the new system, youth have options: a simple record, traditional, contemporary, PowerPoint, or website. We want youth to be proud of their work and share it in ways that they choose. You can read more about the new record/showcase criteria and achievement policy on page 8. There are also examples on the website <http://barron.extension.wisc.edu/4h> (look for Record/Showcase and Achievement Criteria. We hope youth are proud and excited to share their work with this new system.

As always, if you have any questions, comments, concerns or ideas, please reach out to me at sara.waldron@wisc.edu or 715-537-6253.

Sara Waldron
Sara Waldron, Barron County 4-H Educator

INSIDE THIS ISSUE May 2023

Message from Sara	1
CALENDAR UPDATES/	2
Message from Elora/ Graduation Info	3
Spotlights	4-5
Project Central	6-7
New Project Record Book Break Down	8-9
Barron County Fair Happenings	10-14
Area Animal Science Days	15-17
Oshkosh Airshow	18
Tractor Safety	19
Activity Pages	20-21
Outdoor-Tracks	22
Club Resources	23
Leaders Council	24

CALENDAR OF EVENTS

For an up-to-date list of events, please visit the Barron County Extension website: <http://barron.extension.wisc.edu>; for a listing of statewide events, please visit the State 4-H Website: <https://4h.extension.wisc.edu/opportunities/calendar/>

May

1 Trap
2 Air and .22 Rifle
3 Spring Livestock Committee Meeting
6 Leathercraft Work Day
8 Trap
9 Air and .22 Rifle
13 Leathercraft Work Day
15 Trap
16 Air and .22 Rifle
16 Leaders Council Meeting
20 Outdoor Archery Shoot
20 Cat Project Meeting
21 Horse Drill Meeting
22 Trap
23 Air and .22 Rifle
24 Area Animal Science Days Registration Due
24 State Fair Dairy Registration Due
30 Air and .22 Rifle

30 Canada Trip Attendees Meeting

June

1 Scholarship Applications Due
3 Dairy Breakfast
3 Rabbit Project
4 Softball Starts
8 Sheep Clinic
21 Livestock Kick-off

Save the Date:

Barron County Fair July 19-23

For a full calendar, visit barron.extension.wisc.edu

**Did you sign up for 4-H Softball?
There's still time. If your club doesn't
have enough for a team, contact
4h@co.barron.wi.us or 715-537-6253
to get on a team.**

BARRON COUNTY 4-H APPAREL



Looking for Barron County 4-H Apparel?

We have youth and adult t-shirts, long sleeved t shirts and hooded sweatshirts left from last years apparel order. T-shirts are \$15, Long Sleeved T's are \$20, Sweatshirts are \$35. All proceeds go to the Barron County 4-H Leaders Association. Please contact the office at 715-537-6250 or email Elora at elora.repman@wisc.edu with the sizes you are looking for and we will check our inventory!



Do You know what's Happening in 4-H?

Website/Social Media

For current information, be sure to check out
website: <http://barron.extension.wisc.edu>

Facebook: @barroncounty4h | Instagram: @barroncounty4h

4-H Email Blast

Email Blasts are sent out to all 4-H families in Barron County throughout the month. If you have news to share, please send information to sara.waldron@wisc.edu or 4h@co.barron.wi.us. If you aren't receiving one. Let us know.

Barron County Beacon

The Barron County Beacon is the official newsletter of Barron County 4-H. It is published seven times a year, around the 3rd Friday in

🌿 October 🌿 December 🌿 January/February 🌿 March
🌿 May 🌿 June 🌿 August

Please submit newsletter items by the 15th of the months above. Submissions can be sent to 4h@co.barron.wi.us

Project Website Links

Dog project: <https://go.wisc.edu/m96f40>

House Plant Project: <https://go.wisc.edu/d621p6>

Horse Project: <https://go.wisc.edu/3z90h8>

Livestock: <https://go.wisc.edu/4j0z67>

May We Ring in Spring with 4-H



New Website Styles and Resources

You may have noticed that there is a new style to the website. This change will hopefully make navigating the 4-H page even more efficient. Everything is not on the one page with buttons to help put you in the right direction. You may notice that there is no longer a list of calendar events on the side of the screen. Now, to locate the calendar, there is the green button at the top which is always up to date on all 4-H events. We hope you like the new design as much as we do. If you need help finding something don't hesitate to send us an email.

We also have some new resources available. Within the extension office we have many different 4-H curriculum books as well some other books. You can now find a detailed list of all the books we have available to be checked out under curriculum found within this link <https://barron.extension.wisc.edu/4h/#4hresources>. You can find the name of the book, as well as a purchase link if you would like to have your own copy, but feel free to stop by the office to check out our copies.

Facebook and the 4-H website are constantly being updated so make sure you check them out for all up-to date events and information. Plus, if you or your club has an event you want us add to Facebook or the website, send it my way at elora.repman@wisc.edu

Elora Repman

Elora Repman | Barron County 4-H Program Assistant

Have questions?

Contact your Club Leader: They are a great resource!
or Contact Sara Waldron, 4-H Educator
715-537-6253 or sara.waldron@wisc.edu



Extension
UNIVERSITY OF WISCONSIN-MADISON

2023 4-H Graduation

Are you planning on graduating 4-H this year?

Graduation will be held during the Barron County Fair. Please take this survey: <https://forms.gle/EDFTiCrhwBjg5sdW6> There are also many scholarship opportunities for those entering any post-secondary education found on the Barron County website under scholarship applications at <https://barron.extension.wisc.edu/4h/#4hresources>

Watch you email for information on these upcoming events:

Cake Revue--Sunday July 16. Watch your emails for information about cake decorating classes coming this spring.

Please watch your email for sign-up slots for the 4-H Food Stand (emails will come from club leaders). This year we will be signing up using Sign-Up Genius. For county/project leaders, that want to help, we will be sending out a county wide email too.

4-H Spotlight

Share your 4-H News!
Please submit spotlights here:
Send us pictures: <https://bit.ly/bc4hpic>
Submit a Spotlight: <https://bit.ly/spotlightbc4h>
OR email sara.waldron@wisc.edu

Spotlights

Barron- Polk County Talent Expo 2023



Everyone had a lot of fun at the 2023 Talent Expo. We are already preparing for next year! Hope to see you there.

Pictured from left to right: Garrett Broker, Avery Willger, Quinn Waldron, Daniel Broker

Area 4-H Member attends 4-H Space Camp

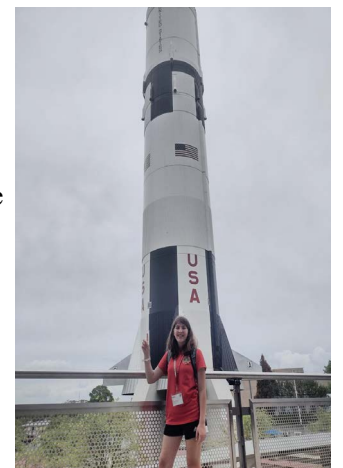


Local 4-Her attends Space Camp in Huntsville, AL

By Kiera/Sarah Fox,

Vermillion Cruisers 4-H Club (Cumberland WI)

Over 180 cosmos loving youth and volunteers, representing Wisconsin 4-H clubs boarded buses and blasted off to Space Camp at the US Space and Rocket Center in Huntsville, Alabama. Kiera Fox of the Vermillion Cruisers club in Cumberland represented the Barron County 4-H program. Space Camp is an educational experience aimed at combining real-world applications of science, technology and mathematics, and also serves as the official Visitor Center for NASA Marshall Space Flight Center and is a Smithsonian Institution affiliate. Wisconsin 4-H attendees enjoyed a weekend of NASA mission control simulated launches, space walks, Artemis mission updates, live views from the International Space Station and more. Kiera reports that they even wrote postcards that will soon be sent into space and then mailed back to camp attendees. When asked what she enjoyed most about her Space Camp experience, Kiera stated, "I really liked the space presentations, the mission control simulator, the multi axis training, and meeting kids from all over Wisconsin." When asked if she got the inside scoop on alien life in our universe, she replied in a very serious tone, "No comment." Kiera hopes to serve as a youth mentor at Space Camp next year.



As a 4-H member, youth have many opportunities to find their "sparks" through experiences at the club, county, state, and national level. Space Camp is just one of the opportunities. To learn more about Barron County 4-H please visit barron.extension.wisc.edu or call us at the Extension office (715-537-6250).

Barron-Burnett-Washburn County Foods & Clothing Revue



The 2023 Clothing and Foods Revue took place in April. Youth participants from Barron County joined youth from Burnett and Washburn Counties to share their work. Barron County youth participated in the clothing revue, food action demonstrations, and foods place settings.

Project Discovery Days



Project Discovery Days. Youth participated in the last Project Discovery Days of this 4-H year on May 6. They made blue bird houses, perler beads, painted rocks and origami, and felt flowers. Thanks to our volunteers for hosting!



Members from the Prairie Hustlers 4-H Club leaned out old Blue bird houses and hung one new one on the Tuscobia trail near Haugen.

Barron County 4-H Sheep Project invites you

Learn about sheep and have fun too!

2023 Sheep Clinic - Part 2

Thursday, June 8th at 7 PM
Barron County Fair Grounds
Livestock Arena

Topics:
Fitting/Showing Sheep

Register by June 5th at
<https://forms.gle/5AcXNeKz8SqXU8288>



photos by Bailey Picknell

**Please contact the Barron County Extension Office with
Questions 715-537-6253 or 4h@co.barron.wi.us**



OUTDOOR 

ARCHERY FAIR

SHOOT



Brill Area Sportsman's Club
2501 26th Ave, Rice Lake, WI 54868

May 20th from 8am to 4pm

Horse Project

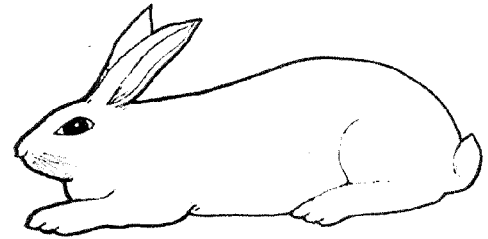
**Drill Team Meeting May 21st at 6pm.
Room 110 in the Barron Government Center**

If you have not turned in your Coggins, please mail them to Michelle Stouffer: 2568 5 5/8th Street, Cumberland, WI 54829. Coggins forms should include a color photo. If your original Coggins did not include a picture, you will need to send a photo to the same address (these need to be a physical copy). If your coggins paper test does not have a picture of your horse on it, you must submit a picture of your horse with your coggins paper test" this is a new fair rule that we will need a picture of all animals prior to participating in any events with your horse. Please see pages 8,9.

Cat Project

4-H Cat Project Meeting May 20th from 5-6pm Room 110 Government Center, 335 E Monroe Ave, Barron WI

Rabbit Project



Rabbit Project Meeting

June 3rd from 9:00am- 11:00 at the rabbit barn at the Fairgrounds.
Topics: Breeds, health, clipping nails, checking teeth, tattooing, and showmanship

If you want please bring your rabbit.

All rabbits must be tattooed prior to the fair.

Call Chris Broten at 715-837-1840 home or 715-642-0661 cell with any questions.



Livestock Kick-off

**LIVESTOCK Kick-Off Meeting
Wednesday, June 21 (Fair Grounds)
Required for all youth showing livestock
7PM - All Youth - Youth Expo Building
6:15 - New Member Q&A (Optional)
Show Ring**

Contact 4h@co.barron.wi.us or call 715-537-6253 if you cannot attend to get on the make-up list.

More Project Information

For all project information please visit the link below.

<https://go.wisc.edu/35e19y>

Record/Showcase and Achievement

Barron County 4-H Record/Showcase

Record keeping and reflection are two valuable skills that can be practiced and learned in 4-H. No matter how you choose to keep records and/or reflect on your work, this process is a great way to keep a permanent record of your 4-H experience.

Why complete a record/showcase?

- Opportunity to reflect on learning and Look back on your accomplishments
- Improve/learn communication skills
- Information you need to complete future applications for jobs, scholarships, college, 4-H interviews, and much more.
- All the information you need will be in one place!
- Learn life skills!

All members of the Barron County 4-H program are encouraged to complete a record/showcase as a requirement for achieving in the current 4-H year. The following pages explain the Barron County 4-H Record/Showcase process.

Members who have met guidelines for achievement:

- Become eligible for event funding per Leaders Association policy
- Meet criteria for achievement as designated by any group charters or committee guidelines (it is the responsibility of the member to be aware of project guidelines)
- Will be eligible for awards and recognition based on levels of achievement as designated by the Leaders association

ACHIEVEMENT, AWARDS AND RECOGNITION

There are four levels of achievement based on Record/Showcase completion

GREEN LEVEL – Individuals meeting Green Level Criteria Achievement will be recognized with a certificate and recognized at the annual awards banquet.

BRONZE LEVEL (Club Project Award)–Individuals meeting Bronze Level Criteria Achievement will be recognized with a certificate, Bronze level medallion and recognized at annual awards banquet.

SILVER LEVEL (County Project Award)–Individuals meeting Silver Level Criteria Achievement will be recognized with a certificate, Bronze level medallion and Silver Level Medallion and recognized at annual awards banquet.

GOLD LEVEL (Overall Record Award) – Individuals meeting Silver Level Criteria Achievement will be recognized with a certificate, Bronze level medallion and Silver Level Medallion, and Overall Record Award and recognized at annual awards banquet.

Cloverbud Activity Book Award – Cloverbuds who complete and submit a Cloverbud Activity Book or Showcase will receive recognition at the Achievement Program.

County/State Awards: Please check criteria for county/state level awards to make sure your submission will be accepted. A complete listing of awards is found on the Barron County 4-H Website.

RECORD/SHOWCASE OPTIONS

There are many ways to keep records of your involvement in 4-H. Below is a description of each style accepted.

4-H Project Record Form: This is a simplified version of a 4-H Record. It can be used by any member for basic achievement for any project area.

3rd and 4th 4-H Project Record Form: This is a simplified version of a 4-H Record that is perfect for Exploring 3rd and 4th graders. 3rd and 4th Graders are encouraged to add a Cover page and be creative. These are eligible for Bronze level awards for 3rd and 4th graders only!

TRADITIONAL 4-H RECORD BOOK

A traditional 4-H Record Book using the latest requirements and forms available.

CONTEMPORARY 4-H RECORD/SHOWCASE

A Record that uses the latest requirements and information from the forms, but not necessarily on the provided forms. These can be submitted as a printed book or electronically.

POWERPOINT, GOOGLE SIDES, WEBSITE or SIMILAR - A visual software or web application presentation of 4-H records and members learning and reflection.

**All submissions MUST follow the order of the scoring rubric and include required information.

*for livestock youth to be eligible for next year's sale, they must , the achievement record must be about livestock animal - financial record may be sales cost analysis form | all other youth may choose any project



Barron County 4-H Achievement Policy

Barron County 4-H

Barron County 4-H is open to all youth in grades 5K-12th grade and one year post high school as long as they are a member in good standing and meet all criteria/policy guidelines as established by Wisconsin 4-H

*A member in good standing is a 4-H member who abides by the Code of Conduct and meets group or educational project participation requirements and deadlines.

Per 4-H guidelines Groups and/or educational projects may designate their own participation requirements and deadlines, it is the members responsibility to be aware of project guidelines.

Note: The above guidelines and definitions are established by Wisconsin 4-H and Barron County 4-H and cannot be changed or defined by the 4-H Leaders Association or any other group or club.

Barron County 4-H Achievement

4-H Project Achievement empowers young people with skills for a lifetime and recognizes the hard work and dedication put into project work throughout the 4-H year. Achievement guidelines are set by the 4-H Leaders Association as a baseline, but can be adjusted based on individual circumstances/needs and is up to the discretion of the individual club/club leaders.

In order to achieve in any Barron County 4-H Year, youth members (grades 3 and above) must:

- Be a 4-H member in good standing*
- Do a demonstration
- Exhibit a project item at a 4-H meeting, event, county fair or other community event.
- Submit a Member Record/Showcase of their work (i.e. record book, project record form, or other project summary/showcase as defined by their club)

Note: Clubs may have additional rules for club achievement; however these rules would not affect the individual's achievement on the county level.

Members who have met guidelines for achievement:

- Become eligible for event funding per Leaders Association policy
- Meet criteria for achievement as designated by any group charters or committee guidelines (it is the responsibility of the member to be aware of project guidelines)
- Will be eligible for awards and recognition based on levels of achievement as designated by the Leaders association

Cloverbuds in grades K-2 may choose to submit a Cloverbud Record/Showcase and participate in the ways above to be recognized for achievement. Cloverbuds are automatically eligible for funding and any cloverbud related awards and recognition.

Note: Achievement guidelines will be communicated on a yearly basis by club leaders and the county office. Club leaders will make a reasonable attempt to contact members about deadlines and achievement policies. If achievement will have a direct impact on specific project status/participation, a letter will be sent from the Barron County Extension office. Extension Staff may also request to see youth record submissions to verify completion. This process is meant to be a positive learning experience for youth supported by parents and club leaders and volunteers.

Barron County Fair Happenings (2023 Fair Theme, Let the Good Times Grow!)

Helpful Information For 4-H Families

2023 Barron County Fair HELPFUL INFORMATION FOR 4-H FAMILIES

The Fair showcases and celebrates the achievements of Barron County's youth involved in 4-H and other youth organizations

4-H members get the opportunity to show what they have been working on and learning throughout the 4-H year in all of their projects. It's the GRAND FINALE of the 4-H year!



The Fair

- Decides on what can be shown at the fair.
- Makes the fair book.
- Hires Judges.
- Sets the schedule.
- Makes the rules.



4-H

- Supports members in their learning year round.
- Shares important information about the fair.
- Supports youth during the fair.



Members/Families

- Register by deadline
- Work with Club Leaders to meet requirements/ deadlines.
- Bring Entries to the fair.
- Share their hardwork.

I want to show at the fair, What do I need to do?

Information about registering for the fair: You can find information about the fair in the latest Barron County Fair Book. Copies of the book can be found with your club leader, picked up at the Extension office, or found online at barroncountyfair.com.

- **How do I enter 4-H youth in the Barron County Fair?** 4-H members complete their registration for the fair by the entry deadline. It is preferred that exhibitors register online at barroncountyfair.com. Please make sure you enter the correct address information as this is where premium checks will get mailed to.
 - **Registration Deadlines**
 - **Online Registration deadline JUNE 20**
 - **Paper Registration form deadline June 10**
 - **What can I enter in the fair?** You can register any projects you have worked on related to your 4-H learning. Some Departments have specific requirements for showing (please see fair book for guidelines)
 - **What category/age group do I use?** Youth should enter things in the grade youth just completed, grades are based on the 4-H year.
 - **What if I put something in the wrong category/age group?** Bring it to the fair and let the judge know. They will help you put it in the right category.
 - **What if I can't figure out where to enter something?** Ask or make a best guess. (LEGOs are entered under Mechanical Sciences, Models)

2023 Barron County Fair

HELPFUL INFORMATION FOR 4-H FAMILIES CONTINUED

- **How many things can I enter?** Some Departments have limits on what can be entered, however youth may not enter more than one project under the same class.
(example, In the Cultural Arts Department (J-18), you can enter multiple drawings, but only 1 artistic drawing in crayon (small) -- class 11 and 1 zentagle (class 31).
- **Can a parent enter things in the fair?** Yes! You can enter in the open class. Check the fairbook for information or visit barroncountyfair.com
- **Fees.** There is a \$5 fee for all youth fair entries. This pays for your wristband to get into the fair for the whole week. Check with your club leaders on how to pay, each club writes 1 check for ALL wristbands so it is important to contact your club leader for specific requirements. Don't send your own check to the fair.
- **When do I bring my entries to the fair?** Animal entries have specific times listed in the fairbook/on the website for arrival and judging. Conference judging is on the Tuesday of Fair week from 1PM-6PM. *Make sure you check requirements for entries (some have specific display guidelines)*
 - **Fair Tags:** You will need to pick up your fair tags from your club leader prior to fair week. They will let you know when/where. You will tag your projects before you bring them to the fair and keep the bottom portion to pick up your project after the fair.
 - **What if I registered a project but didn't finish it?** That's ok, just throw away the tag.
 - **What if I am missing a tag?** Bring your project to the fair, take it to the judge and tell them you do not have a tag. Someone will make you a new one.
- **When can I take my entries home?** Animals and Exhibits must remain at the fair until the release time, 5:30PM unless otherwise communicated.
- **How are things judged at the fair?**
 - **Youth Animal Entries** are judged at specific times during fair week using criteria listed in the fair book. Most animal/livestock entries are judged Danish style during the run of the fair. All information can be found in the fair book or online at barroncountyfair.com.
 - **Youth Exhibits:** Non-Animal entries are brought on Tuesday of fair week from 1PM-6PM. Each entry is individually judged via conference judging (face-to-face meeting with the judge). This means youth meet with judges in each department and talk about their entries. There will be signs pointing you in the right direction when you get there.
 - **Pre-Fair Events:** There are some pre-fair events (Foods Revue, Cake Decorating, Performance Arts Entries, etc.) you cannot enter in these after the event has happened. Check for dates in the fair book.
- **What if I still have questions and can't find the answer?** Feel free to contact whoever you are most comfortable contacting, someone will point you in the right direction.
 - Contact your Club Leader
 - Contact the Extension Office: 715-537-6253 or 4h@co.barron.wi.us
 - Contact a Fair Superintendent (phone numbers are listed in the fairbook). Fair Superintendents help ensure a department runs smoothly during the fair.
 - Contact the Fair Office (Jacque Schaffer): When in doubt, contact Jacque Schaffer, the Barron County Fair Secretary at 715-296-0440 or barroncountyfairsecretary@gmail.com or call the fair office 715-736-FAIR and someone will return your call:

***Please remember that most of the individuals helping with the fair are volunteers and sometimes it is hard to get immediate answers. Just know that someone will help you figure it out. If you have questions, PLEASE ask. But remember, the closer we get to fair time, the busier it is. Plan ahead. We are here to make sure participation at the fair is a positive experience!*

Barron County Fair | barroncountyfair.com

From the Barron County Fair

Reminder: Premise ID needed to show animals

If you are entering animals in the Barron County Fair (dairy, beef, swine, sheep, poultry, and/or horses), it is a Wisconsin state requirement that a Premise ID is on file with the Fair Office. Departments of rabbit, dog, and cat entries do not require a Premise ID number. If you have animals at more than one location, please provide Premise IDs for each location.

This information will need to be submitted prior to the fair (if you do not have it you will not be allowed to show your animals--it needs to be updated every 3 years). More information about how those will be submitted will be communicated soon. If you do not have a current premise ID, please apply for one now. YOU MUST HAVE A CURRENT PREMISE ID TO EXHIBIT ANY ANIMAL AT ANY FAIR IN THIS STATE.

Information about Premise ID:

https://datcp.wi.gov/Pages/Programs_Services/PremisesRegistration.aspx

How/Where to Apply/Renew: <https://wiid.org/premises-registration-renewal/>

What is premises registration and why is it important?

Premises registration is a way to locate where livestock or dead animals are kept or congregated. Premises are listed in a computerized database with information about what species of animals are kept at any location. Each premises is assigned a number that remains with the location.

Premises registration allows for much faster traces when there is an outbreak of an animal disease or an animal-borne human disease. If we know where susceptible animals are located, we can control the disease more quickly. Premises registration is not individual animal identification.

The WLIC offers an educational video highlighting the importance of animal disease traceability and the use of premises registration and individual animal identification—including the use of radio frequency identification (RFID) tags—to protect the food supply. The video explains how farm to fork traceability starts by tagging animals at the farm of origin through the end of life, and how using this technology provides fast and easy trace-back in case of an animal disease outbreak.

Voluntary or mandatory?

Premises registration is mandatory in Wisconsin, with one exception (see below). Wisconsin requires premises identification, regardless of whether the USDA or any other state requires it. It should be done as soon as animals are added to your premises and must be renewed every three years. It is important to keep your information accurate to ensure animal health officials have the most up to date information in the event of an animal disease outbreak.?

What must be registered?

Any location in Wisconsin where livestock are kept or congregated must be registered. Livestock includes:

Cattle and other bovine animals

Swine

Poultry

Sheep

Goats

Horses and other equine animals

Farm-raised deer and other cervids

Gamebirds including pheasants, quail, wild turkeys, migrating waterfowl, pigeons, and exotic birds raised in captivity

Bison

Llamas and other camelids

Ratites such as emus and ostriches

Fish

Premises includes:

Farms and hobby farms

Veterinary clinics with large animal hospital facilities

Stables

Animal markets

Livestock feedlots, animal trucker and dealer premises where animals are kept

Slaughter, rendering and dead animal plants

Livestock exhibitions

Any other location where livestock is kept or congregated

The premises registration number stays with the location; that is, a change in property ownership will not change the premises identification number.

Barron County Fair Barn Quilt Contest

July 19-23, 2023

Barn quilts were originally conceived as a way to encourage economic development by promoting ag-tourism and local businesses while bringing travelers to rural areas. While quilts are usually made up of a series of squares of the same pattern placed together, a barn quilt is always a single square.

In 2018-19 Barron County Fairest of Fair, Sarah Doyen, came up with the idea of a Barn Quilt Contest. She asked quilters from the Barron County Area if they would make a 12 ½" x 12 ½" quilt square of plain colors to enter them in a contest. We were very happy with the number of squares that were donated the first year.

This is our 4th year for the contest. So this geometric-based square is the perfect opportunity to funnel your quilting creativity into a show-stopping square that will stop Fairgoers in their tracks. NEW this year we added 3 categories. We are asking for squares for our animal barns. For the 2023 fair year we are offering a dairy, beef, and piece category. Ear year we will be adding the other barns. The winning square will be reproduced into a barn quilt board by Perfect Image Sign of Rice Lake. The fabric squares become property of the Barron County Fair. The squares will be sewn into a quilt and put in the Fairest of the Fair Basket to be auctioned off at the Wisconsin Fair Association Convention representing Barron County talents. Blueberry Line Quilting Shop will be putting the quilt together and quilt it. You can drop off your square by July 10th, 2023 at :

1. Busy Bobbin, 234 N Wilson Ave, Rice Lake WI
2. Blueberry Line Quilting, 101 Diamond St, Ridgeland WI
3. Angela's Quilt Shop, 1503 4 1/2 Ave, Dallas, WI
4. Heart Blossom Quilt Shop, Downtown Sand Creek, WI
5. Barron County Fair Office on Monday or Tuesday of the fair.

We would like to thank the quilt shops for helping promote this great opportunity.

For more information please check it out on our website: www.barroncountyfair.com or on facebook . Barron County Fair.



July 19-23, 2023

Barron County Fair
Quilt Contest

Open to all Adults
and Youth

Pick up a entry form and directions from the following sponsors:

Busy Bobbin, 234 N Wilson Ave, Rice Lake

Blueberry Line Quilting, 101 Diamond St, Ridgeland

Angela's Quilt Shop, 1503 4 ½ Ave, Dallas

Heart Blossom Quilt Shop, Sand Creek

Website: www.barroncountyfair.com

Barron County Fair Facebook page

Deadline July 10, 2023



Seeking 2023 Fairest of the Fair

Applications now open for Barron County
Fairest of the Fair contest!

Would you like the chance to represent the Barron County Fair, have fun, meet new people, polish your interviewing and speaking skills and gain professional experience that will last a lifetime? The Barron County "Fairest of the Fair" contest is looking for contestants 18 years of age or older. The contest is open to those who have been a resident of the state of Wisconsin for at least one year. Contestants must reside in Barron County or an adjoining county, if the majority of their fair and or school activities are in Barron County. Contestants are eligible to apply for a maximum of two years.

The Fairest of the Fair is chosen by a panel of impartial judges based upon; personality, attitude, maturity, professionalism, speaking ability, poise, appearance, involvement in school, community and fair activities along with overall impression.

Barron County Fair and State Fair Registrations Now Open

Barron County Fair

GATHER 'ROUND!

Barron County Fair Registrations Now Open

Let the Good Times Grow!



Barron County Fair Registrations Now Open
Let the Good Times Grow!

Registration Link:
<https://go.wisc.edu/8461uy>

Link to Register Today
<https://go.wisc.edu/8461uy>

Wisconsin State Fair

Hey Junior livestock exhibitors! Online entries are now open!

Before you enter, make sure you have these items ready:

- Electronic copies of registration papers (breeding stock only- Junior Beef, Dairy Cattle, Goats, Sheep and Swine
- YQCA certification number and exact name on certificate
- Social Security Number

New health check-in procedures for sheep exhibitors:

<https://tinyurl.com/5fuma3xc>

Entry Deadline:

May 24, 2023 at 7pm (Central Time): Online entries close
Late Entry Deadline - late fee charged after May 24 at 7pm:

*May 31, 2023 at 5pm (Central Time): Late online entries (with \$100/exhibitor late fee) close. No additional entries will be accepted

**Dairy Entries should contact Steve Fronk for information/help registration

**All other entries should visit the website for more information



For more information visit:
<https://wistatefair.com/competitions/junior-livestock/>

Area Animal Science Days

General Information

Barron County Is Hosting WI 4-H Area Animal Science Days

The summer is coming fast. One fun 4-H opportunity will be 4-H Area Animal Science Days and our county will be the host. There will be many different activities to partake in as well as various contests. It will be held at the Barron County Fair Grounds on June 28th. You can expect dairy, livestock and horse judging as well as poster and photography contests. Please see the next few pages for more information. Please make sure to check registration requirements as well as rules and parameters.

Dairy Judging and Livestock Judging for rules/guidelines go to this link-----
<https://4h.extension.wisc.edu/opportunities/statewide-events-and-opportunities/area-animal-science-days/>

WI 4-H AREA ANIMAL SCIENCE DAYS

**Barron County Fair Grounds
June 28, 2023**

**Dairy Judging, Livestock Judging,
Horse, Posters, Photography.**

Registration Deadline
May 24, 2023

Register for a Barron County Team or poster contest
<https://go.wisc.edu/m27dt6>



Extension
UNIVERSITY OF WISCONSIN-MADISON

Poster and Photography Contest

All Species Poster & Photography Contests (Wood and Barron County Sites Only)

Who can participate? The statewide Area Animal Science Day Poster and Photography Contest is open to all 4-H youth who love and are interested in animals - showing, judging, drawing, painting, sketching, studying and photographing! Area Animal Science Day photo and poster contest participants do not have to be enrolled in any animal projects to take part in the poster and photography contest.

What do the posters and photos need to be about? Subjects can pertain to any animal – rabbits, cavies, dogs, cats, horses, goats, poultry, beef, sheep, swine, dairy and more!

How can they be entered? Fill out the online Area Animal Science Days registration form. Pictures and posters can be brought with your participants on the day of the event. You do not need to be present for judging.

Poster Contest

Divisions: Beginner Grades 3-6
Junior Grades 7-9
Senior Grades 10-13

Contest Rules:

- A. Limit one poster per exhibitor per animal species.
- B. Use a standard size poster board of 14" X 22". (1" unmarked border is recommended.)
- C. All posters must include on the back: Name, Address, County and Grade.
- D. Posters can be any topic related any animal species. Examples: care, training, health, nutrition, psychology, breed, anatomy, careers, safety, reproduction, youth leadership in project, etc.
- E. Posters must not include 3-D materials.

Photography Contest

Divisions: Beginner Grades 3-6
Junior Grades 7-9
Senior Grades 10-13

Contest Rules:

- A. Each exhibitor is limited to one photograph per animal species.
- B. Photos must be the work of the contestant during the current project year.
- C. Single Photos
 1. Must be no smaller than 5" x 7" and no larger than 8" x 12".
 2. Must be mounted on a mount board 11" x 14".
 3. Matted photos must also be mounted on a mount board 11" x 14". No corner mounts.
- D. Photos may be black and white or color.
- E. No frames or glass permitted. White edges must be trimmed.
- F. No captions are permitted. Entry may be titled on back of mount.
- G. Information on the back of the mount must include: Name, Address, County, Grade, and Division.
- H. Entries failing to meet the photo contest rules will be disqualified.
- I. It is strongly recommended that all entries have a secure hanging device attached to the back for display purposes.
- J. Entries will be judged on creativity, spontaneity of subject, technical quality, and overall appearance.

Open to everyone in 4-H.



Register (Barron County) <https://go.wisc.edu/m27dt6>



HORSE JUDGING CLINIC AND CONTEST

THE TENTATIVE SCHEDULE FOR THE DAY LOOKS LIKE THIS:



Barron County Youth
Registration

<https://go.wisc.edu/m27dt6>

8:30 - 9:00AM CHECK-IN AND WELCOME

9:00 - 10:00AM BASICS OF JUDGING ENGLISH DISCIPLINE - THIS CLINIC WILL INCLUDE: THE BASICS OF JUDGING SUCH AS HALTER, SHOWMANSHIP, PLEASURE AND EQUITATION

11:00 - 11:30AM QUESTIONS AND ANSWERS FROM AN EXPERT PANEL

11:30AM - 12:30PM LUNCH (LUNCH NEEDS TO PRE-ORDERED WITH REGISTRATION OR BROUGHT WITH YOU)

12:30 - 1:30PM YOUTH JUDGING COMPETITION - APPLY WHAT YOU LEARNED

1:30 - 2:30PM REASONS - A HORSE JUDGING CONTESTANT GIVES A ONE TO TWO MINUTE VERBAL PRESENTATION MADE BY THE TO AN OFFICIAL JUDGE. THE CONTESTANT JUSTIFIES THE REASONS WHY THEY PLACED THE SPECIFIC HORSES IN THE CONTEST THE WAY THEY DID.

AWARDS TO FOLLOW AS SOON AS THEY ARE AVAILABLE

Participants have an opportunity to learn about judging both western and English type classes. You will learn about the basics of horse judging and what is important to look for as you are judging each type of class. Following the clinic, participants will be able to participate in a judging contest, including giving oral reasons.



Community Opportunities

Want to attend the Greatest Airshow on EARTH??

Save the date to take a 4-H bus to



Join us on a one-day event on July 25th from 6am - 10pm

Bring your drone to compete in AirVenture's Drone Cage Obstacle Course

Work with others to build a plane ... in one week!

Join us to learn more about EAA & FAA STEM Aviation and Space Education!



Homebuilts

Marvel at craftsmanship and dedication as you walk among the thousands of homebuilt aircraft flown to Oshkosh.



Warbirds

See historic World War II-, Korea-, and Vietnam-era military aircraft at one of the most popular attractions.



Museum

Included with your admission wristband is access to the EAA Aviation Museum and its hundreds of rare and unique airplanes.



Interested in Attending?

E-Mail

4h@co.barron.wi.us
and we will send you details when they are available!

INFO:

Transportation and AirVenture tickets Provided for FREE for Youth 18 and under

4-H trained adult chaperones will also get FREE admission

Adult tickets prices:
Ticket Price:
EAA Member Price: \$41
Non - Member \$59 Veterans/Active Member: \$41

More info available on the website:
<https://www.eaa.org/airventure>

Registration will open up in May!

Participating Counties Include:

- Rusk
- Waukesha
- Sawyer
- Washburn & Burnett
- Barron
- Winnebago
- Dane
- Kewaunee

AirVenture schedule <https://www.eaa.org/airventure/ea-airventure-schedule-of-events>
Only in Oshkosh

Experience the largest annual gathering of aircraft and aviation enthusiasts.



Barron-Polk

Tractor Safety

Mon., June 19-Thurs., June 22 2023

Barron High School

SCHEDULE

Monday, Tuesday, Wednesday
8:30AM-3:30PM

Thursday: 8AM-Noon (testing)
*Student should bring lunch for each session.
Milk, juice and/or water will be provided.*

LOCATION

Barron High School
1050 Woodland Ave, Barron WI 54812

Register Today

Course Fees: \$20

Online:

barron.extension.wisc.edu/tractorsafety
Call: 715-537-6250 (Kim Grover)

For Questions Contact:

Extension Barron/Polk County

4h@co.barron.wi.us or 715-537-6250

Kristen Hanson—Barron High School (715) 537-5627

Arlaina Meyer—Cumberland High School (715) 822-5117

Courtney Wolfgram—Prairie Farm High School (715) 455-1861

Pete Kolpack—Rice Lake High School (715) 234-2181

Brenda Scheil—New Auburn High School 715-237-2350

Jeffrey Ladd—Cameron High School P715-458-4560

Kelly Hubert—Turtle Lake High School 715-986-4470

Michele Gordon—Clayton High School 715-948-2163

Emily Johnson—Clear Lake High School 715-263-2114

Derrick Meyer—Amery High School 715-268-7300

Jenelle Larsen—Luck High School 715-472-2152

Paul Jakupciak—Osceola High School 715-294-2127

Donna Tietz—Frederic High School 715-327-4223

Lisa Jagiello—Unity High School 715-825-3515

The Wisconsin Youth Tractor & Machinery Safety Certification Program is designed to meet state and federal requirements for youth.

- 12-13 year olds operating tractors or self-propelled implements on public roads under direction of their parent or guardian or for work related to their family farm operation
- 14-15 year olds who will be employed (or working without pay) by farms not operated by their parents/family.

Youth will learn:

- Safe Tractor and Implement Operation and Farm Safety Techniques including identifying potentially hazardous situations and how to reduce risk of injury
- Tractor instruments, controls, maintenance and safety inspections of tractors.
- Proper use and operation of tractors and tractor limitations.

Certification Requirements

- Eligible students must be 12 years old or older prior to the beginning of the course.
- Attend 24 hours of instructional training
- Pass written examination with a minimum score of 70%
- Pass a practical driving examination demonstrating safe operation of tractor and 2 wheel implement through obstacle course



And Barron/Polk
County Schools

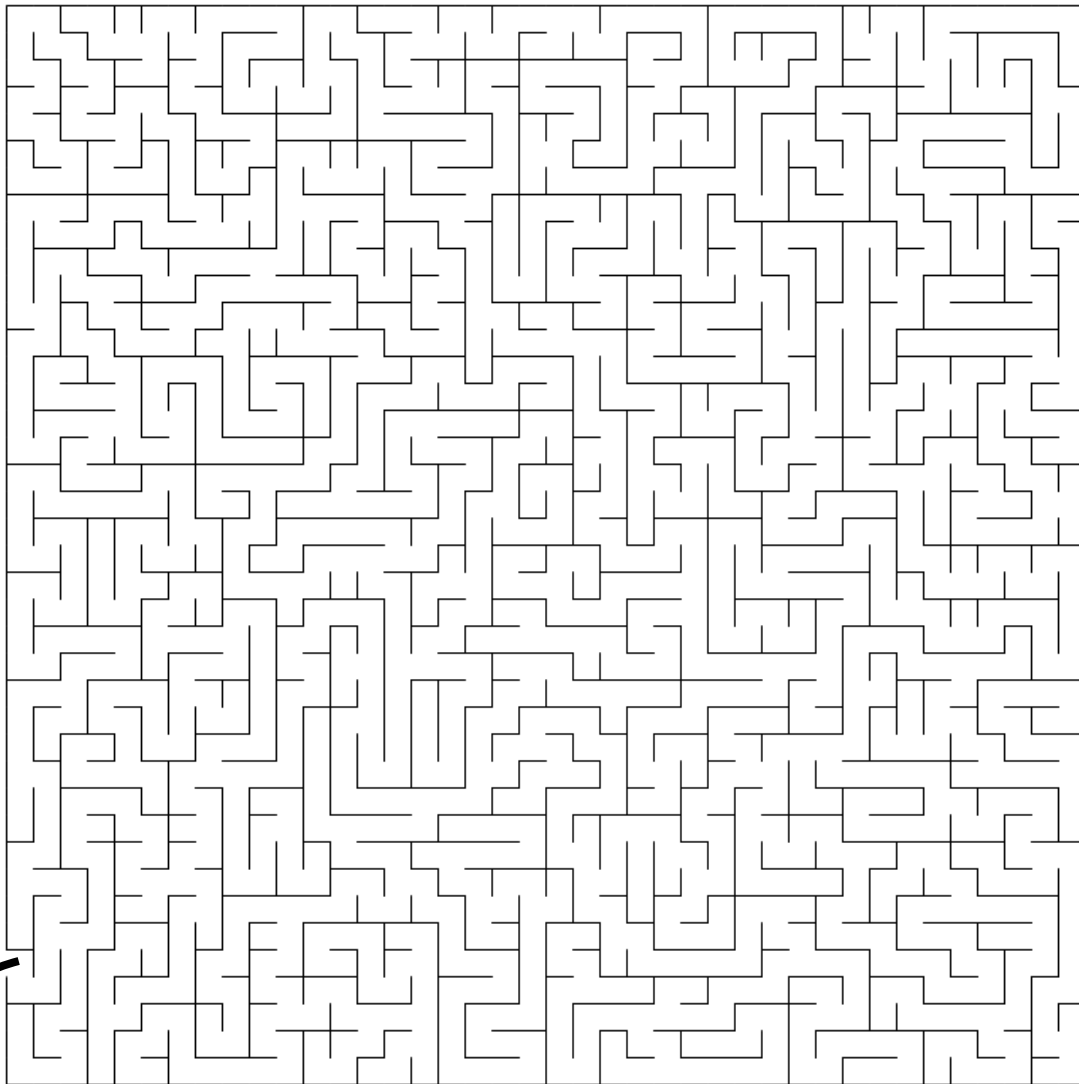
An EEO/Affirmative Action employer, University of Wisconsin-Extension provides equal opportunities in employment and programming, including Title IX and ADA requirements. Requests for reasonable accommodations for disabilities or limitations should be made prior to the date of the program or activity for which it is needed. Please do so as early as possible prior to the program or activity so that proper arrangements can be made. Requests are kept confidential

4-H Word Search

S N O I T A R T S N O M E D M D A X U S N L A D
 O E C H X L B T P A Q Y W D O Y E T H O B Y I K
 Y A Q X W U M Q I Z Y I O K O C H K A Z K F Z D
 M N S D W V C F H A O V N C I F J A N H B H M W
 K R F F U U I O S Z W Q U V E C S A T J K H S X
 A K A R D J S T R I P L R Y Q G T W H T C E B X
 Z N I B R U D C E M G E K Q N N R N C N N A F J
 S J R E J T D M D R S M J R E I U D O X O L P R
 Z E L Y O U C P A Y A M M M V V I U U M Y T C L
 R E Q X F A Y T E M K Z C N N I J E N Q E H H I
 L D O N F M T Z L E U M Q A U L O G T J A Z W V
 H T F R I X I V X T O T F N B Y T D R U I F W E
 X A T Z C T N B H E A R T B K H R E Y X P X R S
 A E N W E N U E B Y G E M T C T E L X W B J G T
 J Q E D R E M D A E H Q A U I L C P H I M D R O
 O C H T S M M U K O D G K N T A O F A L P T O C
 G Q R V S E O I R K W N R O I E R M D N X V P K
 L H N J T V C K Q W P I B R Z H D E S O J M C G
 O S I C C E R B U D A O U B E L B K Q G P W C V
 Z E M L E I F V D W V D X W N K O F L C V W E N
 J D F U J H S Y L N H P O Y S K O B K J X O R U
 N G H B O C N C R Q K I S N H I K G Y N G A U F
 U K Y B R A O E O L C A Q G I K U B G G E X O S
 Y Q T N P O O B W S N N F K P O Z G V L D N A R

- | | | | |
|----------------|-------------|-------------|----------------|
| LEADERSHIP | RECORD BOOK | CITIZENSHIP | HEALTHY LIVING |
| ACHIEVEMENT | WORLD | COUNTRY | FAIR |
| DEMONSTRATIONS | DOING | LEARN | COMMUNITY |
| SERVICE | HANDS | HEALTH | HEART |
| HEAD | LIVESTOCK | CLUB | HAT |
| OFFICERS | PROJECTS | PLEDGE | |

Help Chris Get to the Ferris Wheel



Start

Finish



“Tracks” May 2023



Wildlife WHEP Wisconsin 4-H Wisconsin 4-H Forestry

Website <https://4h.extension.wisc.edu/opportunities/projects/outdoor-education/>
Email: wildlifeforestry@gmail.com



“TRACKS” – May 2023

*Participation in wildlife & forestry activities are open to all Wisconsin 4-H club members.
You can be enrolled in any 4-H project and participate in the activities.*

Wildlife WHEP & Forestry 4-H Friends,

Get those rods and reels ready - Wisconsin's general fishing season opens May 6! (All Wisconsin residents over the age of 16 are required to purchase a fishing license.) The extra precipitation we've been getting has caused some flooding throughout Wisconsin. What happens to fish when streams and lakes flood?

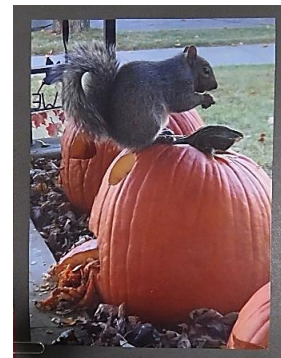
Positive: As water flows pools and deeper channels can be carved. Large materials such as trees get moved offering sheltering structures. Isolated bodies of water get boosts in breeding, population connectivity and genetic diversity. A flood is an opportunity for fish to explore new habitats.

Negative: Fish can die due to sediment and organic matter consuming oxygen. The feeding ecology can be impacted as water salinity alters food availability. Harmful contaminants can enter the water.

A team of volunteers, DNR staff and county staff continuously monitor the water quality on Wisconsin's 15,000 lakes and 84,000 miles of rivers and streams.

As anglers head out to their favorite fishing locations, the DNR would like to remind them to:

- Follow all regulations and license requirements.
- Minimize the spread of aquatic invasive species by removing plants and animals from your boat before and after launching, draining all water from compartments and never moving live fish away from any waterbody
- Practice responsible catch and release if you are letting your catch go.
- Follow safe boating procedures and always wear a life jacket.



2023 Wildlife & Forestry 4-H Art Contest West Bend, Wisconsin

Pictures of some of the more than 100 entries (K-5 through Grade 13).

Wildlife & Woods Virtual Sessions: The next interactive session for your family is on May 24. Free registration is available for your family 4-H Online account under the Events section. The Zoom link will be emailed after the registration is complete. Questions? Email: wildlifeforestry@gmail.com

Do you need wildlife & forestry activities to do in your county? Wildlife WHEP WI 4-H & Wisconsin 4-H Forestry committee has age specific hands-on activities in your county programs. We'll help train your youth and adult leaders. Contact us anytime. Free Wildlife & Forestry Skill Level Booklets are available.

Kerri, “TRACKS” Editor

Special Thanks” are extended to the following for making the “Wildlife WHEP Wisconsin 4-H” & “Wisconsin 4-H Forestry” programs possible: Northern Kettle Moraine Chapter of Whitetails Unlimited, Wildlife WHEP Wisconsin 4-H & Forestry – Washington County; Wisconsin Chapter of National Wild Turkey Federation; Wildlife WHEP Wisconsin 4-H & Wisconsin 4-H Forestry Friends & State Committee Members.
Advisor: Carlea Liermann, Calumet Co. 4-H Program Educator



4-H RESOURCES

Barron County 4-H Curriculum Library

Did you know that we have curriculum to borrow in Barron County? We have STEM, Arts, Animal Science, Photography, Sewing, and more.

If you would like to browse, please stop by the Extension Office. Visit <https://barron.extension.wisc.edu/4h/#4hresources> for a list of our available resources!

Barron County Government Center
335 E. Monroe Ave
Room 2206

4-H VOLUNTEERS

Are you interested in sharing your knowledge?

We are looking for project volunteers to help plan and put on clinics, workshops, etc. for any and all project areas.

If you have an interest, let us know and we will help as much as you need!



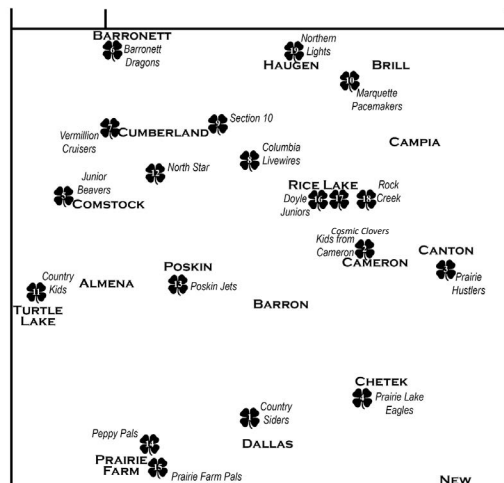
VOLUNTEERS NEEDED

Youth Leaders are welcome to teach and lead with an adult volunteer present!

Barron County 4-H Clubs & Contacts

- | | | |
|----------------------------|---|--|
| 1) Country Siders | Angie Harmon
Alicia Wirth | 715-296-3552
715-949-1088 |
| 2) Kids From Cameron | Jen Stovern | 715-418-3214 |
| 3) Prairie Hustlers | Kirsten Huth
Saundra Linton | 715-764-2097
715-924-4870 |
| 4) Prairie Lake Eagles | Joyce Nelson
Shawna Skoug
Anne Staff | 715-458-1944
715-790-1460 |
| 5) Junior Beavers | Melissa Weaver
Greg Weaver | 715-419-0500 |
| 6) Barronett Dragons | Peg Thompson | 715-822-8872 |
| 7) Vermillion Cruisers | Heather Colburn
Michelle Stouffer | 715-357-6404
715-822-2823 |
| 8) Columbia Livewires | Carie Peterson
Danette Borofka | 715-651-4545
715-651-6444 |
| 9) Section Ten | Tamala Anderson | 715-419-0421 |
| 10) Marquette | Cathy Solum | 715-234-6874 |
| 11) Country Kids | Lynn Kettenacker
Jamie Donath | 715-986-2505
715-529-1124 |
| 12) North Star | Elisha Putzke
Diana Bazewicz
Jean Gurtner | 715-790-3683
715-641-0926
715-822-2732 |
| 13) Poskin Jets | David Frandsen
Kristi Hoff | 715-790-0067
715-205-3166 |
| 14) Peppy Pals | Katrina Chovan
Tori White | 715-455-1104
715-418-0054 |
| 15) Prairie Farm Pals | Becky Segebrecht | 715-505-1413 |
| 16) Doyle Juniors | Cindy Broker
Arlaina Meyer | 715-651-9299
715-554-4031 |
| 17) Cosmic Clovers | Missy Bablick
Cassie Ritchey | 715-827-0434
715-417-0231 |
| 18) Rock Creek | Vacant | 715-537-6253 |
| 19) Northern Lights Lights | Karen Germanson
Jamie Kunesh | 715-236-9123
715-790-0938 |

*Special Interest Membership 715-537-6253





Extension
UNIVERSITY OF WISCONSIN-MADISON

THE BARRON COUNTY BEACON

Barron County 4-H Newsletter

University of Wisconsin -Madison
Division of Extension | Barron County
Barron County Government Center
335 E Monroe Ave., Room 2206
Barron WI 54812

NON PROFIT ORGANIZATION
U.S. POSTAGE PAID
BARRON, WI 54812
PERMIT NO. 74

Change Service Requested

4-H Adult Leader Association Council

President: Emily Drafall (715) 419-0629
Vice President: Jamie Kunesch (715) 790-0938
Treasurer: Tanya Riebe (651) 757-5757
Secretary: Cassie Ritchey (715) 417-0231
Northwest Representative: Karen Germanson (715) 236-9123
Northeast Representative: Cathy Solum (715) 234-6874
Central Representative: Robbie Jo Ellefson (715) 642-2344
Southwest Representative: Joyce Nelson (715) 458-1944
Southeast Representative: Allison Rick (715) 418-1387



@UWEXBarron



@BarronCounty4H



@UWEXBarron

Website:
<http://barron.extension.wisc.edu>



Extension Barron County | Phone: 715-537-6250 | Fax: 715-537-6814

Sara Waldron
4-H Program Educator
sara.Waldron@wisc.edu

Elora Repman
4-H Program/Comm. Assistant
Elora.Repman@wisc.edu

VACANT
Administrative Specialist
extension@co.barron.wi.us

Lori Baltrusis
Area Extension Director
Lori.Baltrusis@wisc.edu

VACANT
Regional Crops Educator

Ryan Sterry
Regional Dairy Educator
Ryan_Sterry@wisc.edu

Kathy Splett
FoodWise Coordinator
Kathy.Splett@wisc.edu

Andrea Gardner
FoodWise Educator
Andrea.Gardner@wisc.edu

Missy Bablick
Human Development Family
Relationship Educator
Missy.Bablick@wisc.edu

4h@co.barron.wi.us

An EEO/AA employer, University of Wisconsin-Madison Division of Extension provides equal opportunities in employment and programming, including Title VI, Title IX, the Americans with Disabilities Act (ADA) and Section 504 of the Rehabilitation Act requirements.