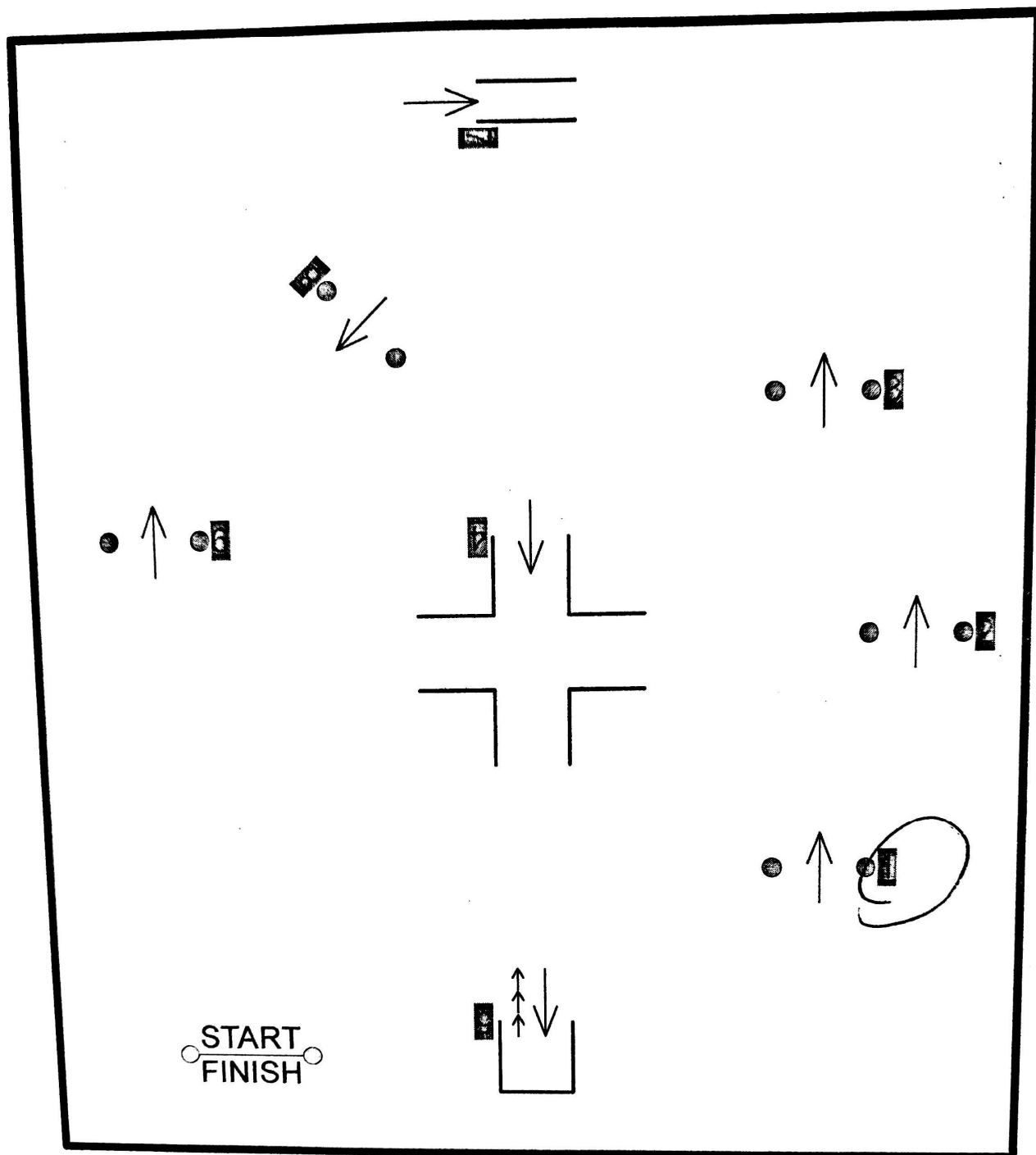


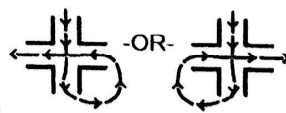
Line Driving Obstacles



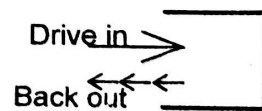
Class Notes/Rules

- This is a low fault competition
- Dislodging ball or ground pole is 1 fault
- The horse and driver must both go through the obstacle; failure to do so will be 1 fault per obstacle
- 1 fault max will be assessed per obstacle
- If the driver misses an obstacle, they may go back to the missed obstacle, complete it, and then drive all following obstacle in order, 1 fault will be assessed
- Lowest time will be the tie breaker
- Carrying a driving whip is optional

Obstacle 4



Obstacle 5



Obstacle 7

